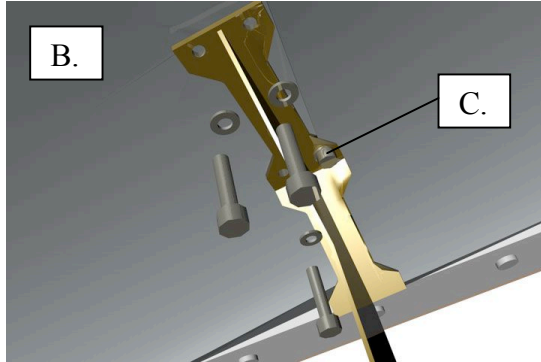
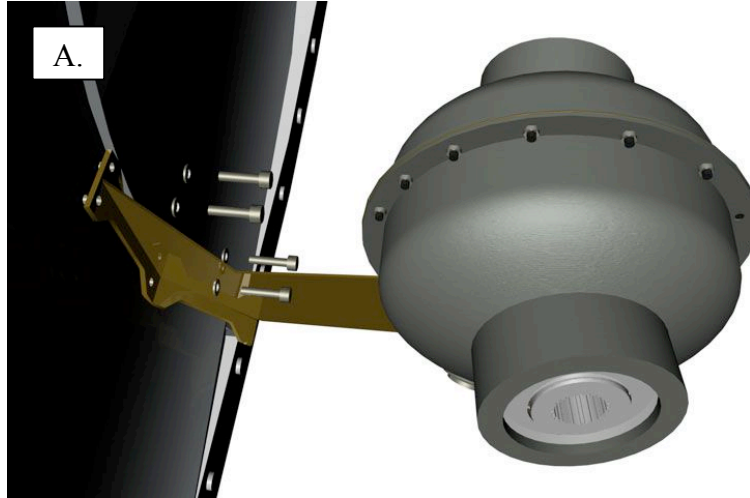


**ACCESSING THE TURBINE AND TRANSMISSION BOLTS  
PIPE MONSTER REPAIR AND PARTS MANUAL**

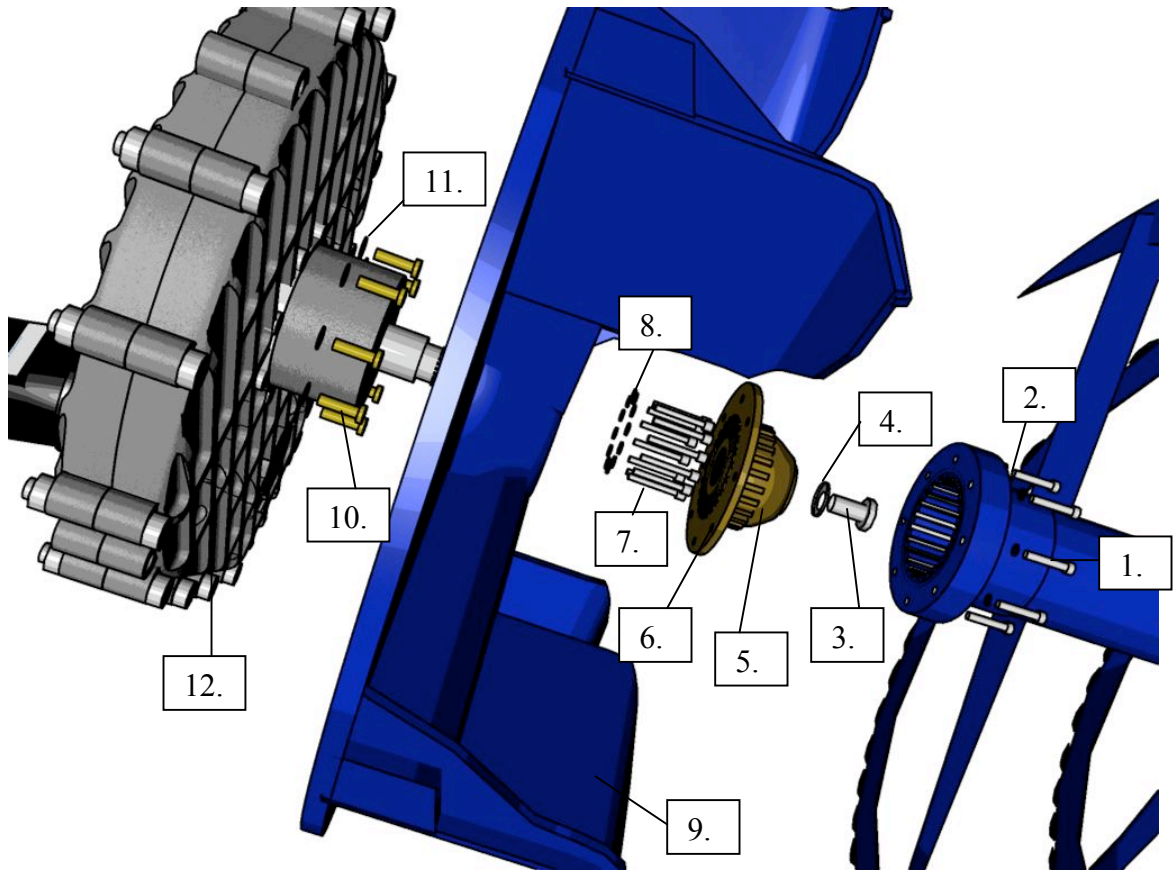
**PBL ENTERPRISES**

<http://service.zauggamerica.com>

## Removing the Gearbox and Haspels



- A. Start by removing the 4 bolts from the number 1 gearbox.
- B. Remove the top bolts and bottom left bolt on the number 2 gearbox.
- C. Loosen the bottom right bolt until the haspels slide apart.



1. Remove these bolts to remove the number 0 haspel.
3. Remove this bolt to remove the spheric gear. Use a block of wood in the turbine to keep it from turning.
7. Remove these allen-head bolts to remove the turbine.
10. These bolts hold the transmission to the frame of the Pipe Groomer. A recent [service bulletin](#) addresses an issue where on some Machines the bolts weren't tapped deep enough.

## Parts List

1	D931 M6X50	Hex Head Cap Screws 8.8
2	NT 201 M6	Special Lock Washers
3	D933 M16X40	Hex Head Cap Screw 8.8
4	NT 202 M16	Special Lock Washer
5	PD 630-102	Spheric Gear
6	SF 5274	Ball Ring
7	D912 M10X20	Socket Head Bolts
8	NT 204 M10	Special Flat Washers
9	PD 708-0	Turbine 0700
10	D933 M10X25	Hex Head Cap Screws 8.8
11	31514	Special Flat Washers
12	SF 2953-0-103	Transmission